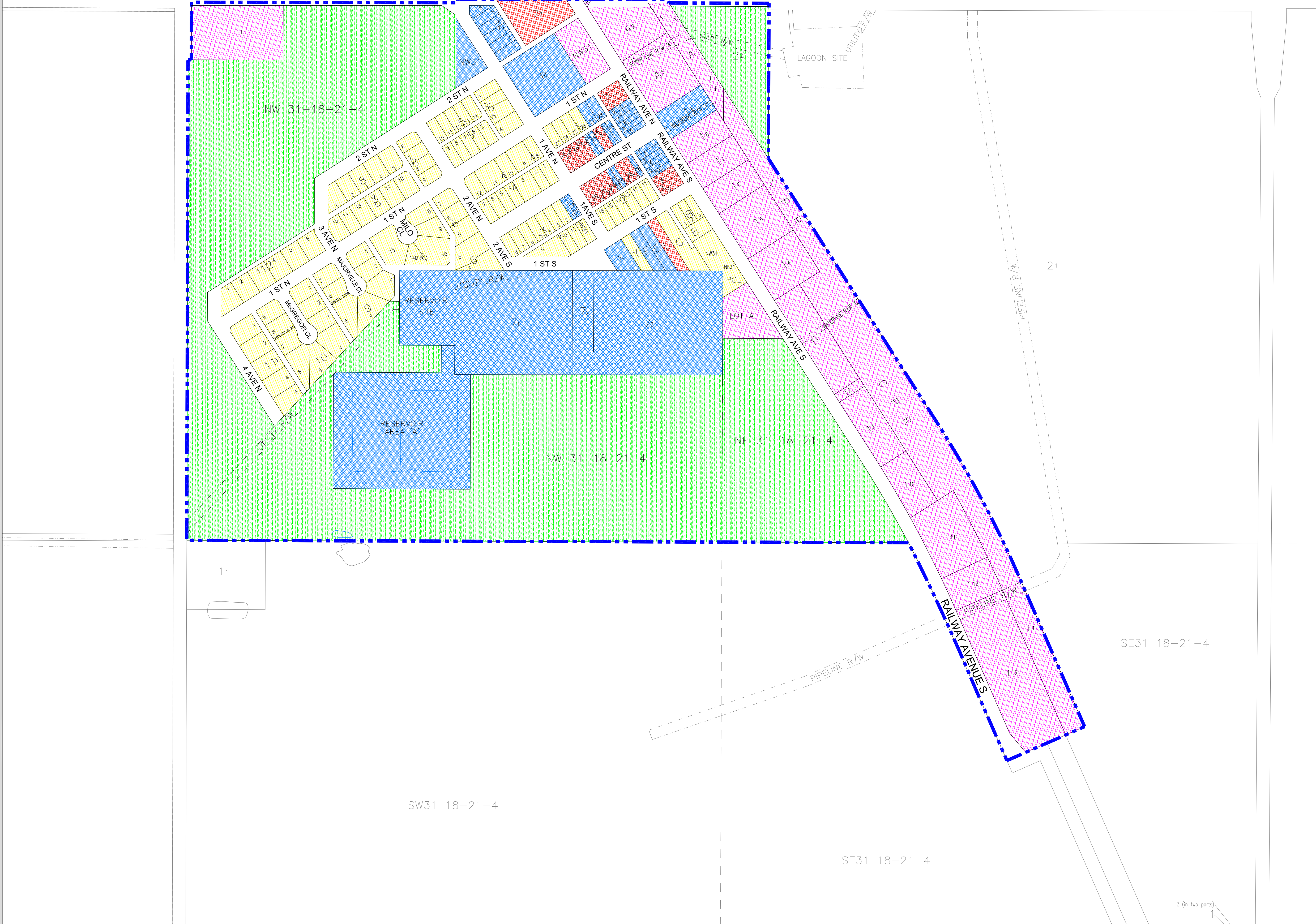


VILLAGE OF MILO  
 Portions Of  
 NE 31, NW 31, SE 31  
 All In Twp 18, Rge 21, W 4 M

----- Village Boundary

HIGHWAY 542

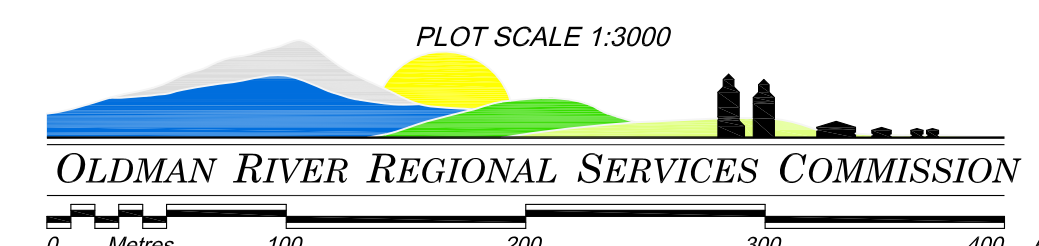


LAND USE DISTRICTS

BYLAW #: 397-17 DATE: September 19, 2017

- Residential R
- Commercial C
- Public P
- Industrial I
- Urban Reserve UR

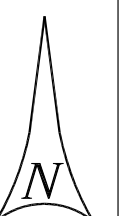
MAP PREPARED BY:  
 OLDMAN RIVER REGIONAL SERVICES COMMISSION  
 3105 16th AVENUE NORTH, LETHBRIDGE, ALBERTA T1H 5E8  
 TEL. 403-329-1344  
 "NOT RESPONSIBLE FOR ERRORS OR OMISSIONS"



October 24, 2017 N:\Vulcan-County\Milo\Milo LUD & Land Use Redesignations\  
 Milo LUB 397-17 September 2017.dwg

0 Metres 100 200 300 400

PLOT SCALE 1:3000



2 (in two parts)