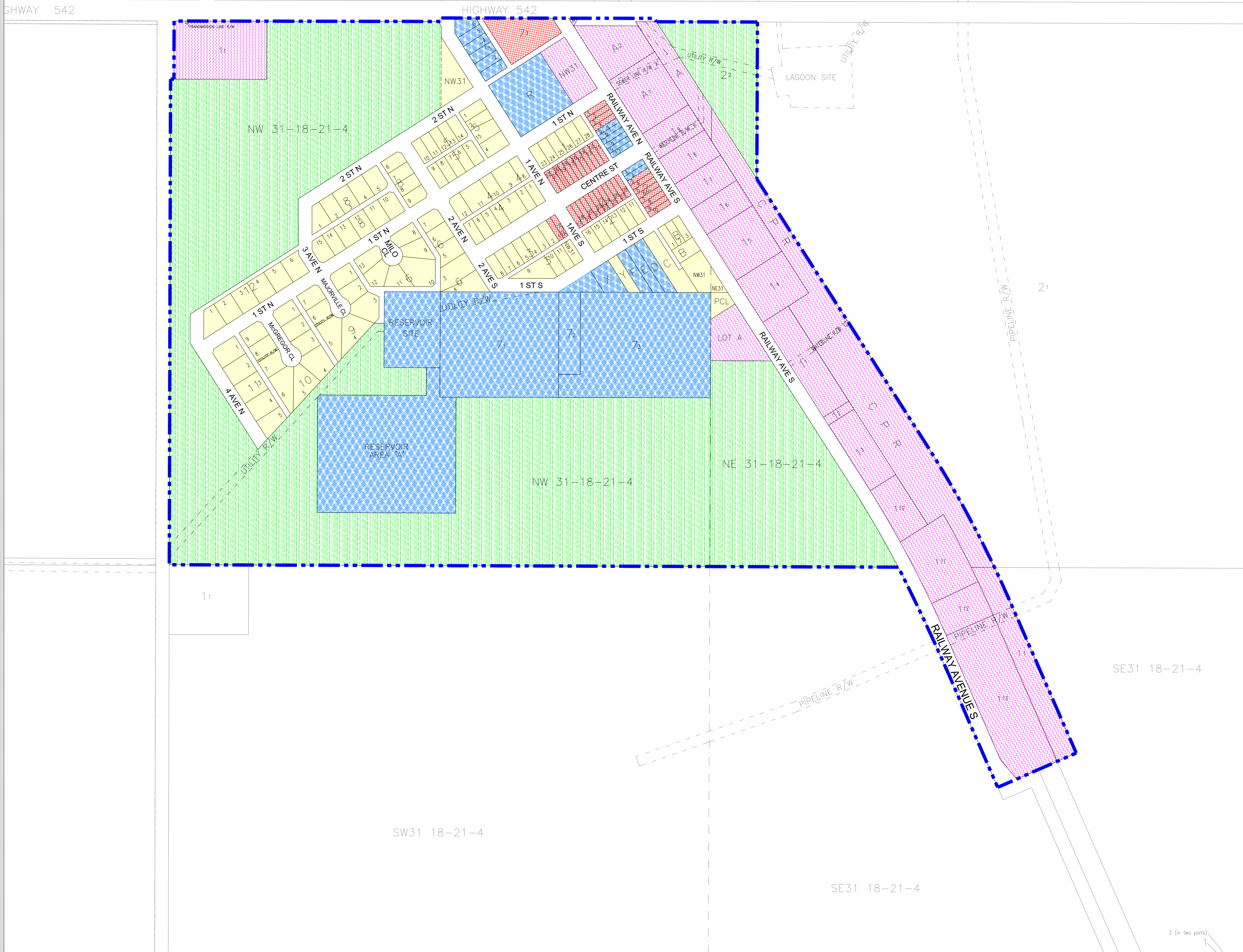


VILLAGE OF MILO
 Portions Of
 NE 31, NW 31, SE 31
 All In Twp 18, Rge 21, W 4 M

----- Village Boundary



LAND USE DISTRICTS

BYLAW #: 322 DATE: AUGUST 27, 1998
 With amendments to Bylaw #368

- Residential R
- Commercial C
- Public P
- Industrial I
- Urban Reserve UR

MAP PREPARED BY:
 OLDMAN RIVER REGIONAL SERVICES COMMISSION
 3105 16th AVENUE NORTH, LETHBRIDGE, ALBERTA
 TEL. 329-1344 T1H 5E8
 "NOT RESPONSIBLE FOR ERRORS OR OMISSIONS"

